



General access information

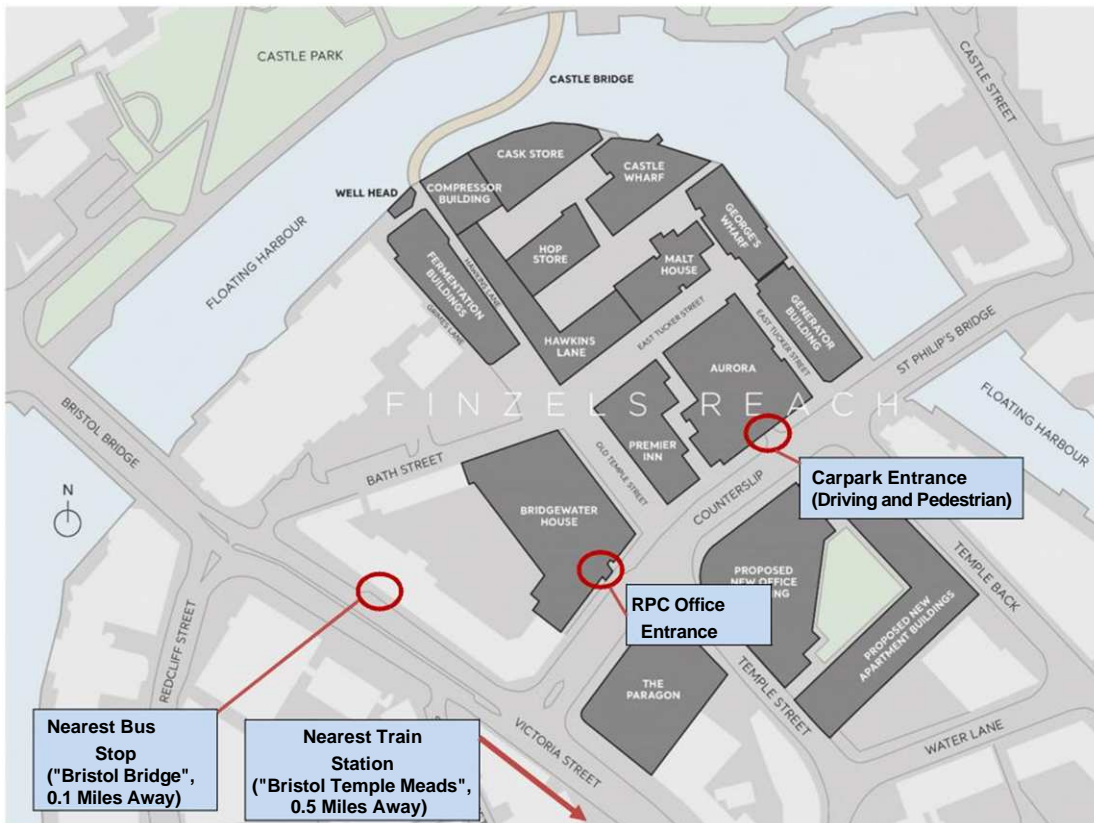
Bristol office

RPC's Bristol office is located in Bridgewater House, in the middle of the city's business centre – on the bank of the river Avon, opposite Castle Park. We are only a 10 minute walk away from Temple Meads, Bristol's primary train station.

You can find us at

Bridgewater House
Counterslip
Redcliffe
Bristol
BS1 6BX

DX: 7842 Bristol
Telephone: +44 20 3060 6000
Fax: +44 20 3060 7000



Nearest stations

- Bristol Temple Meads (0.5 miles away, 10 minute walk)

Nearest Parking

- Bridgewater House (In-House, speak with Concierge to book a space)
- NCP Bristol Broadmead Car Park (0.3 miles away)

Entry via the Main Entrance:

RPC is located on the 3rd floor of Bridgewater House. In the first instance, you should enter via the building's main reception on the ground floor. The step-free entrance is located on Counterslip.



Main entrance to the Building with step free access



Main entrance, reception straight ahead, lifts to the left.



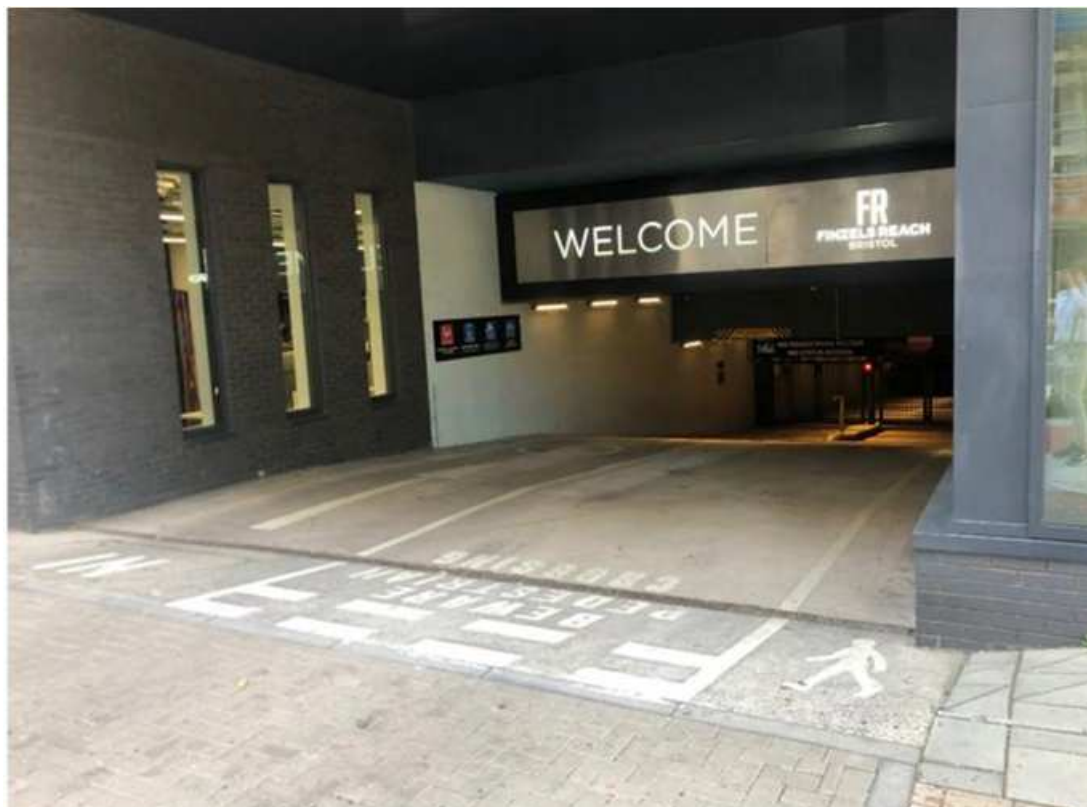
Entrance gates to access lifts.



Lifts up to our working floors, 3rd Floor and make your way to our Reception entrance which is clearly signposted. .

Entry via the car park

You can also enter Bridgewater House via the carpark, located further up on Counterslip.





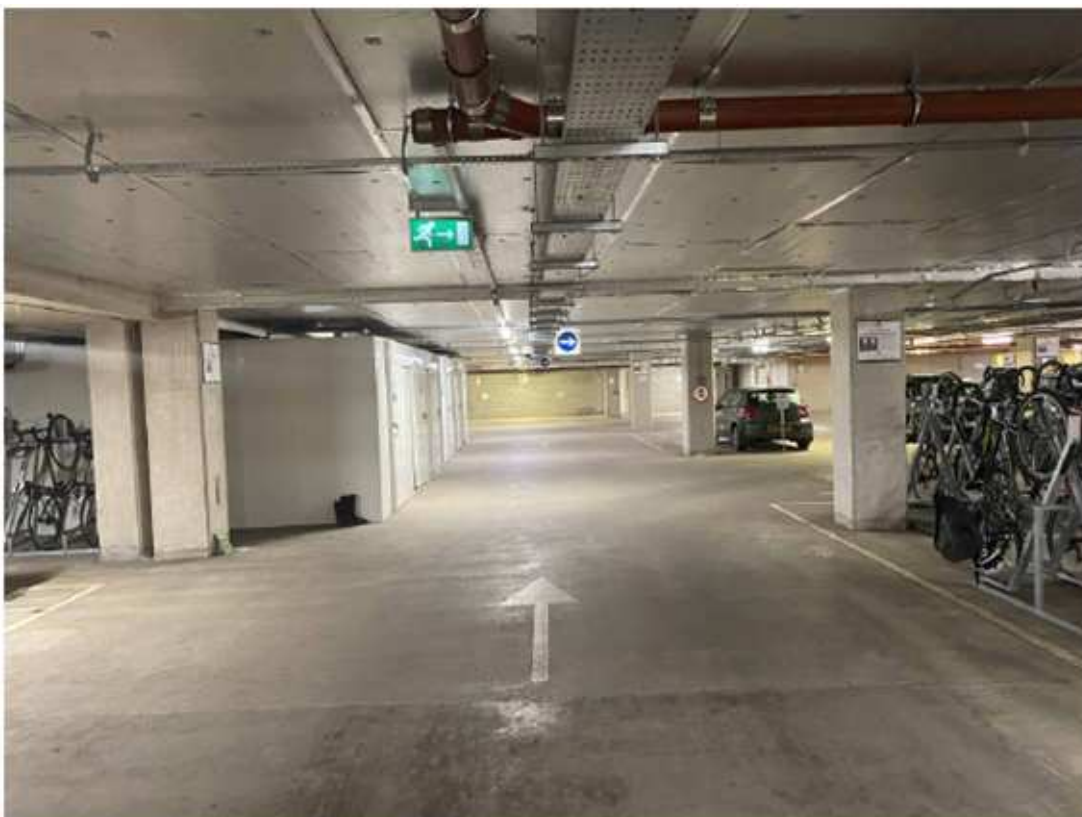
Next to the carpark is a step-free, pedestrian access. Entry via either the car gates, or the pedestrian access, requires prior arrangement with the Bristol Concierge. There is a slight incline as you make your way towards the carpark entrance.



Drive/walk down the ramp and turn left when you reach the bottom.



Drive/walk forward until you reach a smaller ramp, this time going up. Drive up this ramp and turn left again at the top. Then take the first right, followed by another right.



Following the arrows will lead you to RPC bays. The spaces are numbered 29 to 39, and are identified by A4 RPC branded signs.

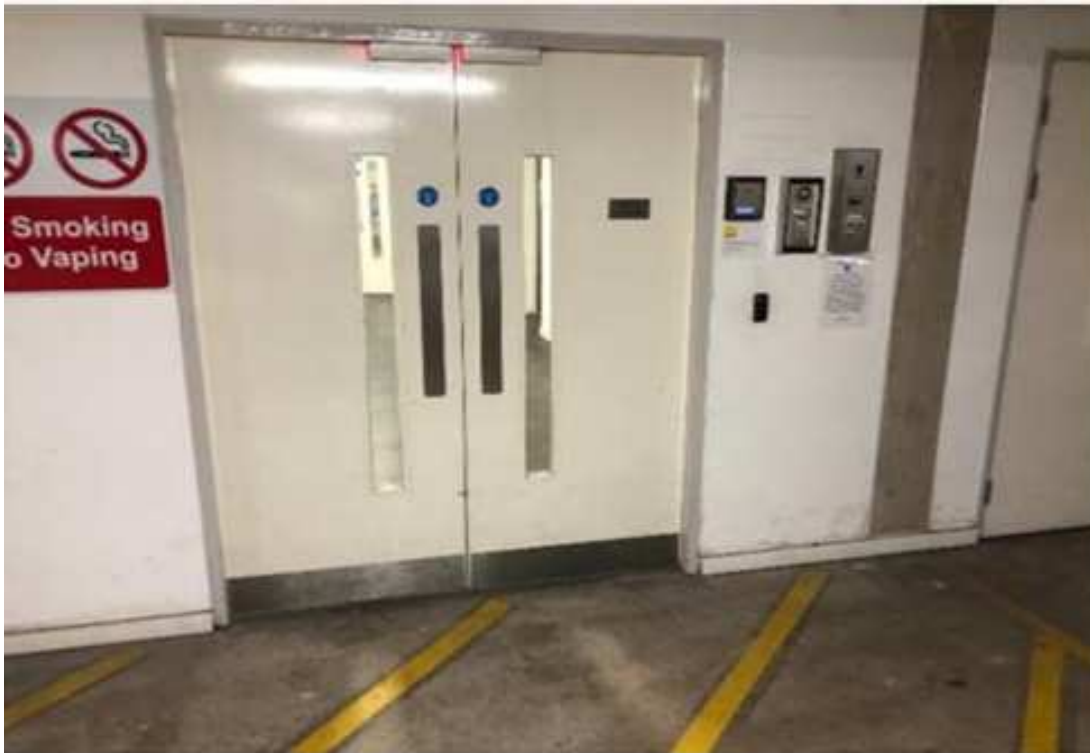


The entrance into the lift lobby to reach RPC office is on the other side of the carpark, on the far all opposite the RPC bays.



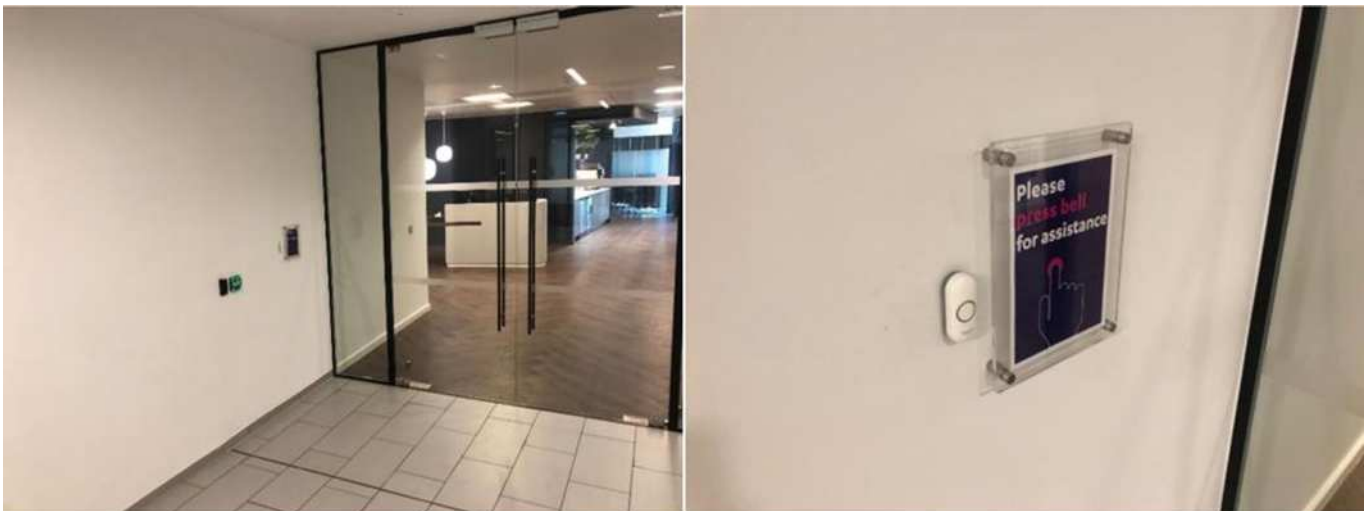
Call Bridgewater House reception on the intercom, the intercom on the left closest to the doors. Reception will unlock the door, whereupon you are welcome to take the lifts up to RPC's working floor, 3rd Floor.

If you can't get a hold of Reception through the intercom, you may call the Facilities Team on 020 3060 6973 or the Reception Team on 020 3060 6900, who will be able to assist you.



Enter through the doors pictured above, which is labelled 'Core 1 Lift Lobby'.

Once on Level 3



On the 3rd Floor, you will need to use an access pass to unlock the doors to RPC's reception. If you are a guest, or have misplaced your pass, please ring the bell. Someone from the Facilities team will unlock the door for you.

If you have having trouble accessing the building, please contact:

- Facilities Team on 020 3060 6973
- Reception Team on 020 3060 6900

Reasonable Adjustments

If you require additional accessibility support, reasonable adjustments can be made to make the office more accessible to you. Please the Facilities Team, who will do their best to accommodate your requests.

Here are some examples of adjustments that can be made but we are always open to discussions on how we can best accommodate:

- Hard copy presentation/materials - Handouts can be printed to replicate what is being show on screen
- Hearing Loop – Portable hearing loop is available in the meeting rooms
- Text size/font - Increased text size or specific font available and potential to further enhanced with special technology
- Time - Additional time may be incorporated into test situations
- Wellbeing room - Quiet room available if needed.

Contact

- Facilities Team on 020 3060 6973
- Reception Team on 020 3060 6900
- Bristol Facilities: Postroom_Bristol@rpc.co.uk